

## Minifold & Klikfold Mobile Aluminium Folding Tower Systems Instruction Manual



### MINIFOLD UNIT 0.7m x 1.5m Platform

5.4m Platform Height

MAX SAFE WORKING LOAD FOR STRUCTURE: **600KG**

MAX SAFE WORKING LOAD FOR PLATFORM: **150KG**

### KLIKFOLD UNIT 0.7m x 2.0m Platform

5.4m Platform Height

MAX SAFE WORKING LOAD FOR STRUCTURE: **600KG**

MAX SAFE WORKING LOAD FOR PLATFORM: **250KG**

# GENERAL SAFETY RULES

## BEFORE USE

**Please read this guide carefully before using this equipment.**

**Mobile folding tower systems and work platforms may only be assembled and dismantled by persons familiar with these instructions**

**Please note that photographs are for illustrative purposes only. Build methods are generic to both systems.**

This step by step user guide provides you with easy to follow instructions to assemble the Minifold and Klikfold systems using the 3T (through the trapdoor) method safely.

For further information on the safe use of mobile access equipment follow the PASMA operator's code of practice.

## **RISK ASSESSMENT**

**A risk assessment must be carried out before using any access equipment.**

If you are using this equipment at work then it must be inspected and identified as safe to use in accordance with The Working at Height Regulations 2005 before you access any platform.

For further help, guidance, replacement spare parts or information on this or other products please contact Euro Towers Limited on +44 (0)1604 644774 or email [sales@eurotowers.co.uk](mailto:sales@eurotowers.co.uk)

## **MAINTENANCE GUIDE**

Inspect the equipment to confirm that all parts are present according to the kit lists and that all parts function correctly and are not damaged. Check that all folding gates, frames, braces, platforms and stabilizers are firmly in place and that all locking mechanisms are functioning correctly.

Do not use any damaged parts, Isolate, Tag and remove them from use.

Keep the components clean to ensure free assembly and dismantling, and to remove slip/trip hazards from frame rungs and platforms.

Do not misuse or abuse the equipment with heavy objects, hammers etc... do not throw the equipment in and out of vehicles, or to the ground when dismantling. Such abuse may reduce the structural integrity of the system.

## MAINTENANCE RULES

Ensure that the scaffold tower is kept clean, especially the spigots and sockets. These should fit together with ease and be secured by an interlock clip.

Check frames and braces, adjustable legs and boards for paint, grit, burrs etc. Remove any foreign substance with a light wire brush. Check no slip hazards exist on the platform.

Check castor wheel for wear and that the brake engages properly.

Where guardrail and platform hooks attach the frames, ensure that the frame rungs are kept clean.

Ensure that all locking hooks function correctly. If necessary lubricate with light oil.

The inside diameter of all hooks should be kept clean to ensure they fit to other components without being forced.

If in any doubt about the proper use and maintenance of the scaffold tower equipment, consult the manufacturer.

Do not misuse or abuse the scaffold tower with heavy objects, hammers etc. Do not throw components in and out of vehicles or to the ground when the tower is being dismantled. Such abuse may reduce the structural integrity of the equipment or scaffold tower.

**REMEMBER YOUR SAFETY DEPENDS THE SAFE ASSEMBLY AND USE OF THIS EQUIPMENT, RESPECT IT**

# GENERAL SAFETY RULES

5.4M  
Build

## USE OF STABILIZERS AND SAFE MOVEMENT

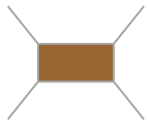
Stabilizers increase the EFFECTIVE BASE dimensions and improve the STABILITY of the tower.

Position the stabilizers symmetrically to obtain the MAXIMUM BASE DIMENSION.

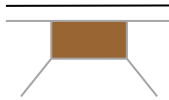
Lower arm as close to horizontal as possible

**Stabilizers must be used for all platform heights above 1.7m at all times.**

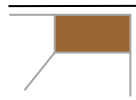
Free Standing Tower



Against a Wall



In a Corner



When moving a folding tower plan the route and be aware of hazards on the ground and up above. Watch out for overhead power lines or other electrical wiring and lighting.

Remove all materials and personnel and reduce the height (if required) to 3.6m platform height.

Adjust the top clamp of the stabilizers and lift the rubber foot no more than 25mm from the ground, release the braked wheels, and apply force manually by pushing at the base. Never use mechanical means to push/pull the Folding tower System.

Once in position reapply brakes, level tower and reposition all stabilizer feet to ensure firm contact with the ground.

## KITTING LISTS

### Kit List Minifold and Klikfold System

#### 1.7m Base Pack

4 x Castor  
1 x Folding Base Unit  
1 x Trapdoor Platform  
2 x Guardrail Frame  
4 x Horizontal Brace  
1 x Toeboard Assembly

#### 5.4m Extension Pack

4 x 6 Rung Extension Frame  
5 x Diagonal Brace  
9 x Horizontal Brace  
2 x Trapdoor Platform  
4 x Multi Purpose Stabilizer

#### Optional Adjustable Leg Pack

(For use on uneven ground)

4 x K5CR 5" Castor  
4 x KALS Short Adjustable Leg Assembly

## PACK HEIGHTS AND SAFE WORKING LOADS

### MINIFOLD AND KLIKFOLD

WORKING HEIGHT	7.4m	WEIGHT (Kg)	
PLATFORM HEIGHT	5.4m	MINIFOLD	KLIKFOLD
Base Pack	1	51	56
5.4m Extension Pack	1	133	150
Adjustable Leg Pack *optional	1*	17	17
PLATFORM SAFE WORKING LOAD		150Kg	250Kg
STRUCTURE SAFE WORKING LOAD		600Kg	600Kg

**SWL:** You must take into account the weight of the unit to calculate the load that can be placed on the structure.

**Example Minifold 5.4m 600Kg – 133Kg = 467 Kg SWL**

**DO NOT EXCEED THE SWL OF THE PLATFORM STRUCTURE**

# EURO MINIFOLD AND KLIKFOLD UNITS ASSEMBLY GUIDE

5.4M  
Build

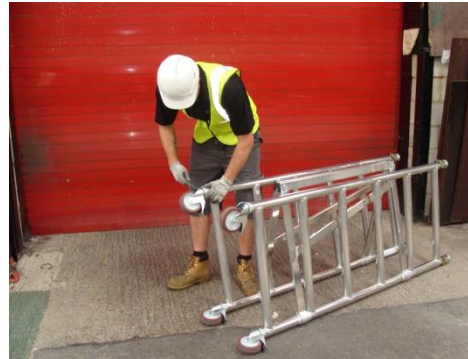
Photographs are for illustrative purposes only.  
Build methods are generic to both systems.

## FOLDING BASE SET UP

Steps 1-3 are used on all platform heights.

## GUARDRAIL BRACES

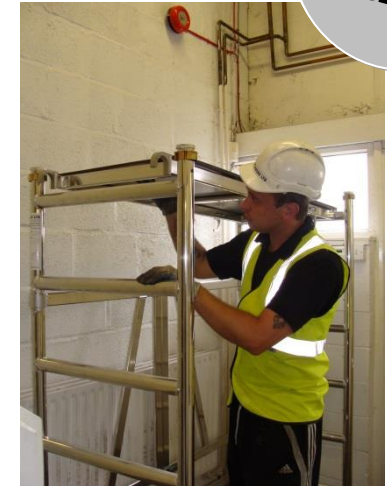
Fit all Horizontal Guardrail Braces by pushing from inside to out either above a rung or a locating stud. NEVER push on from outside the tower or down onto a rung.



1. Ensure all castors are firmly fitted to the folding frame by tightening the bolt located directly under the castor housing.



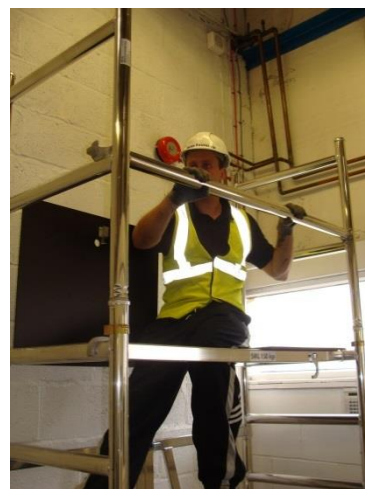
2. Open folding frame and engage toggle clamps.  
**NOTE;** Do not use if any are missing or do not lock securely.



3. Fit platform to 6th rung.



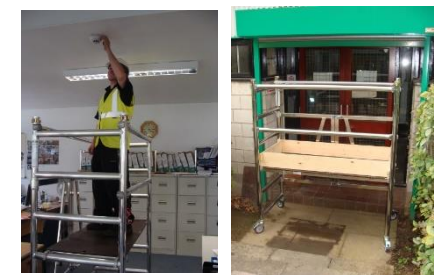
4. Fit guardrail frames and engage interlock clip.



5. Sitting through the trapdoor fit 4 horizontal braces to the verticals of the frames above the rungs, hook opening facing outwards to form your guardrails.



6. Fit Toeboard assembly to complete your work platform.  
**Note;** Dismantling is the reverse of assembly.



## PLATFORM REPOSITIONS

If using on a different rung than those shown always make certain 3 rungs are above each platform to create a safe guardrail. Move supporting Guardrail Braces using locating studs where required.

Diagonal bracing (if used) should be relocated but **NOT REMOVED** from the tower, reposition to suit.

Fit Toeboards to work platforms if required.



# EURO MINIFOLD AND KLIKFOLD UNITS ASSEMBLY GUIDE

**5.4M  
Build**

Tower Builds – follow steps 1-2 first.



3. Temporary fit the platform on the 3rd rung, **NOTE**; if you can perform step 6 from the ground skip this step.



4. Fit one horizontal brace to the vertical above the first rung of the unit on the opposite side of the folding gate.



5. Fit 6 rung frames as shown.



6. Reposition the platform onto the 6th rung.



7. Fit one diagonal brace on the opposite side of the gate starting from the first rung of the unit. **NOTE**; 5.4m Build – add 2 diagonals in running in opposite directions.



8. Fit stabilizers to each corner to create as large a square base as possible. **NOTE**; See stabilizer guide on Kitting List page for guidance.



9. Sitting through the trapdoor fit 4 horizontal braces to the verticals of the frames above the locating studs, hook opening facing outwards to form your guardrails.



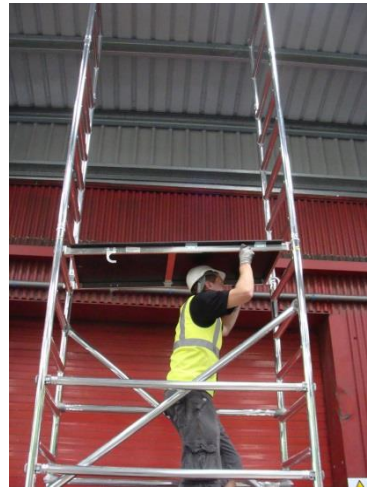
10. Fit 2 diagonals opposite each other starting 1 rung above the platform.

# EURO MINIFOLD AND KLIKFOLD UNITS ASSEMBLY GUIDE

**5.4M  
Build**



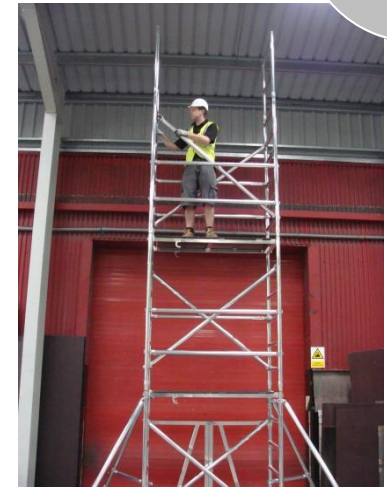
11. Fit the remaining 6 rung frames with guard-rails attached.



12. Fit 2nd platform on rung 12.



13. Sitting through the trapdoor fit 4 horizontal braces to the verticals of the frames above the locating studs, hook opening facing outwards to form your guardrails.



14. Fit 2 diagonals opposite each other starting 1 rung above the platform.



15. Fit 3rd platform on the top rung of the extension frame (rung 18)



16. Sitting through the trapdoor fit 4 horizontal braces to the verticals of the frames above the rungs, hook opening facing outwards to form your guardrails.



17. Fit Toeboard assembly to complete your work platform.  
**Note; Dismantling is the reverse of assembly.**



# EURO MINIFOLD AND KLIKFOLD UNITS ASSEMBLY GUIDE

**5.4M  
Build**

**Other Heights Platform Available In The Folding Unit Range...**



**3m**



**3.6m**

Ben@MKTower.com

[www.mktower.com](http://www.mktower.com)

**MKTOWER**  
**SERVICES LTD**  
HIRE - SALES - REPAIRS - TRAINING